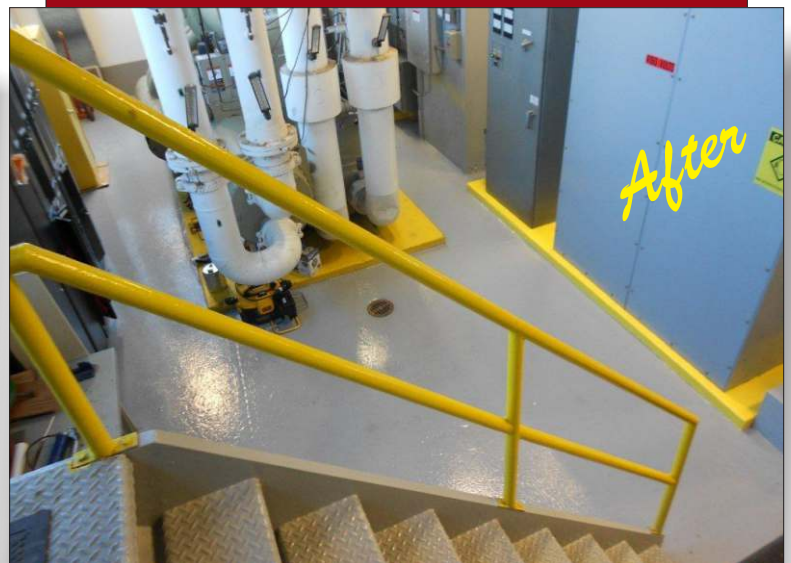




Problem: The original coating on this 2900 sq. ft. mechanical room floor was flaking and chipping. The concrete had also begun to crack and spall in several areas.

Solution: Any damaged areas were manually prepared, then repaired with ENECRETE DuraQuartz. Areas where the original coating was failing were scraped and cleaned with solvent where necessary. The entire floor was then abraded. ENECLAD SuperBond was applied to provide optimum adhesion. Finally, CHEMCLAD SC was applied with broadcast glass bead aggregate and then back-rolled to provide a slip-resistant surface.

Educational Institution Repairs & Protects Mechanical Room Floor with SuperBond, DuraQuartz & CHEMCLAD



6 Platinum Court • Medford, NY 11763
Toll Free: 888-4-ENECON[®] (888-436-3266) • Phone: 516-349-0022 • Fax: 516-349-5522
www.enecon.com • info@enecon.com