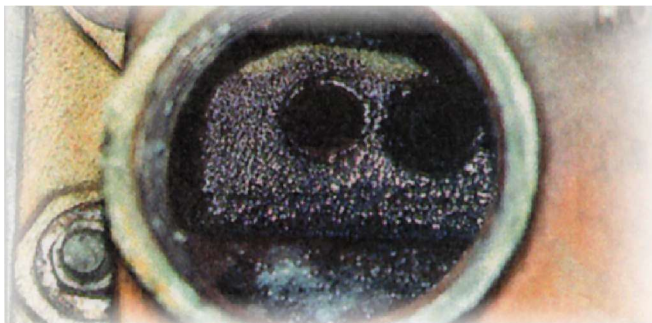
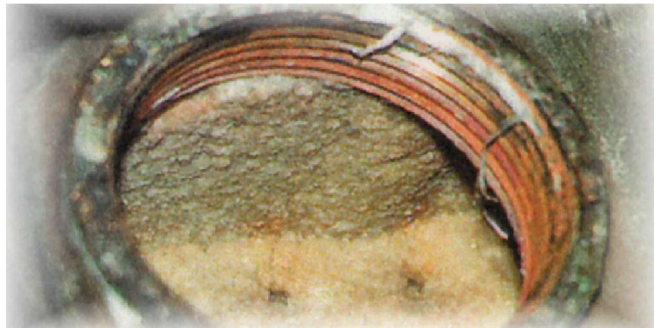


New Jersey Laundry Chooses ENEFLOW Over Water Softener and Saves \$12,800 in Just the First Year!



A New Jersey laundromat was suffering significant mineral scale problems. The owner found that his fin and tube heat exchanger was completely plugged with scale after less than one year's operation. The flow rate through the system is approximately 90 gallons per minute supplied from a deep well submersible pump through a three inch cold water supply line to a series of eight, 120 gallon holding tanks. During a heavy wash day, the pumps can cycle several times an hour and water usage is frequently 300 - 400 gallons per hour.

A major water softening company quoted \$8,000 and wanted to eliminate virtually all of the remaining storage space in the basement to install a traditional ion exchange resin bed water softener. In addition, chemical supplies were projected at \$400 per month.

An ENECON Engineer was given the challenge of solving the mineral scale problem and providing an alternative to chemical

water softening. Two sets of ENEFLOW 5000's were installed -- one pair on the main cold water line entering the building, which, in turn, branches off to several satellite usage points, and one pair immediately before the cold water entering the boiler.

After only 5 weeks the system was opened for inspection. To the owner's delight and amazement, the heat exchanger was completely free of scale, and the scale which had accumulated in the 2 inch copper pipe carrying hot water throughout the building was flaking off and falling on the floor when the pipe was opened.

This \$4,000 installation will save the laundromat \$12,800 in the first year and an additional \$4,800 every year thereafter.

When it comes to cost effective solutions to mineral scale problems, ENEFLOW Fluid Dynamic Power Cells are unquestionable the modern, chemical free, low cost solution!