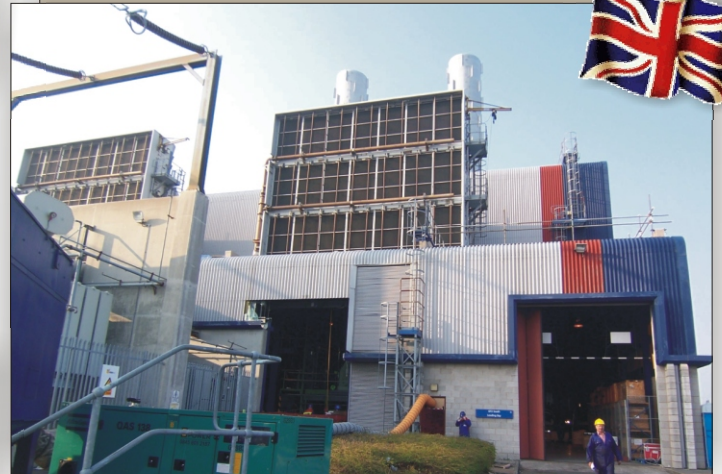




U.K. Power Station Selects ENESEAL CR To Protect Air Intake Ducts



The plant engineers at this power plant located near Liverpool discovered during a plant shutdown that the floor of their air intake plenum was severely corroded. The plant is located near the mouth of the river Dee so the air is salt laden and very corrosive.

Grit blasting was not an option. The plant needed a corrosion resistant coating system that could be applied over a 'minimally' prepared surface.

The local ENECON U.K. Engineering Team recommended ENESEAL CR for this application because it is a 'surface tolerant' coating system and it is ideal for marine environments.

After manually abrading and cleaning the steel floor of the plenum, two coats of ENESEAL CR were applied. The power plant's maintenance engineers were 'delighted' with the results as illustrated in these photos.