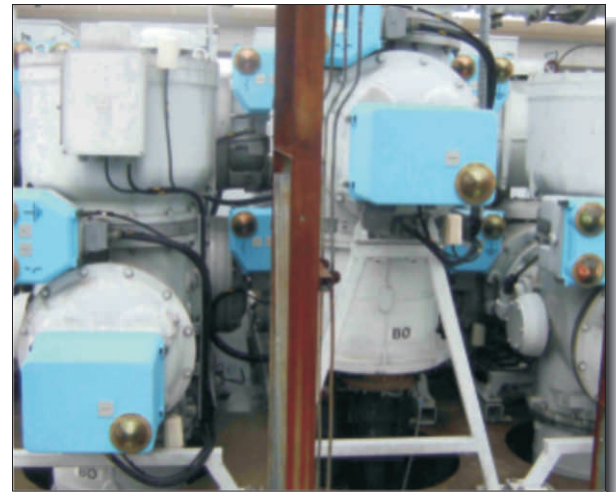


ENESEAL CR Solves Serious Corrosion Issues At New York's JFK Airport

JFK Airport is situated on Jamaica Bay so steelwork is exposed to not only industrial pollutants and jet fumes but also a corrosive marine environment. Facilities engineers needed a corrosion resistant material that could be applied to a variety of steel structures at the airport. The steelwork, however, could only be power washed – grit blasting was not an option. ENESEAL CR, tinted blue in the field, satisfied their unique requirements.



700 Hicksville Road • ENECON Center Suite 110 • Bethpage, NY 11714
Toll Free: 888-4-ENECON • Phone: 516.349.0022 • Fax: 516.349.5522
Website: www.enecon.com • Email: info@enecon.com