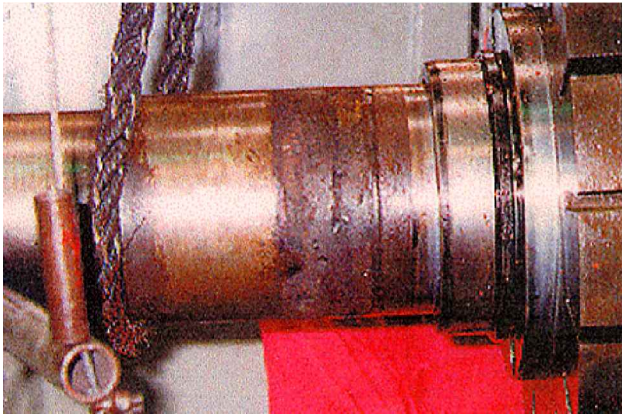


METALCLAD DurAlloy Raises Hydraulic Anchor Winch from Depths of Despair in Israel

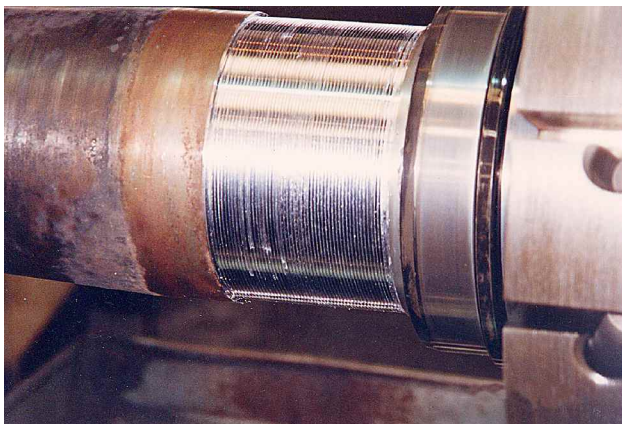


The shaft of this vessel's hydraulic anchor winch was found badly in need of repair during a routine maintenance inspection in Israel.

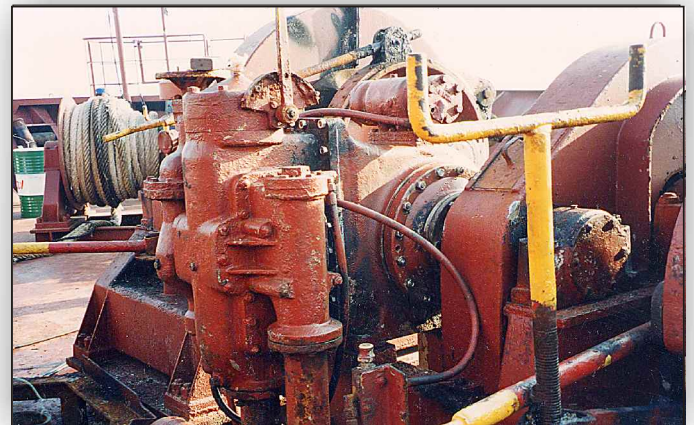
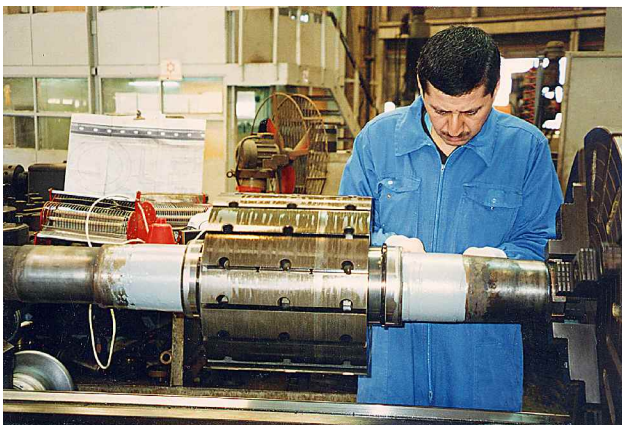
DurAlloy and well established repair techniques proved an unbeatable combination.

Since **damage had not been anticipated**, it was imperative that repairs be completed as quickly as possible. In addition, the risk of possible heat distortion to the shaft could not be tolerated.

The shaft was rebuilt and machined to the exact dimensions required in a matter of only a few hours without any worry about heat distortion; and the anchor winch was re-assembled and **back in service the next day**.



The shipboard engineer contacted the local ENECON Fluid Flow System Specialist in Israel.



700 Hicksville Road • ENECON Center Suite 110 • Bethpage, New York 11714
Toll Free: 888-4-ENECON • Phone: 516.349.0022 • Fax: 516.349.5522
Website: www.enecon.com • Email: info@enecon.com