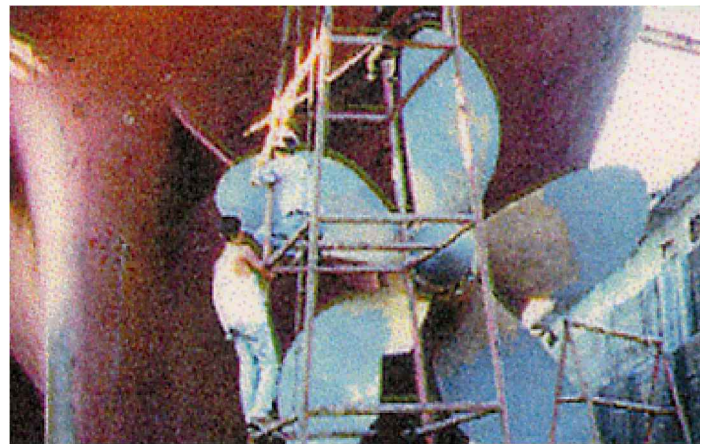


## Ship's Propellers Repaired and Protected with CeramAlloy in the Philippines

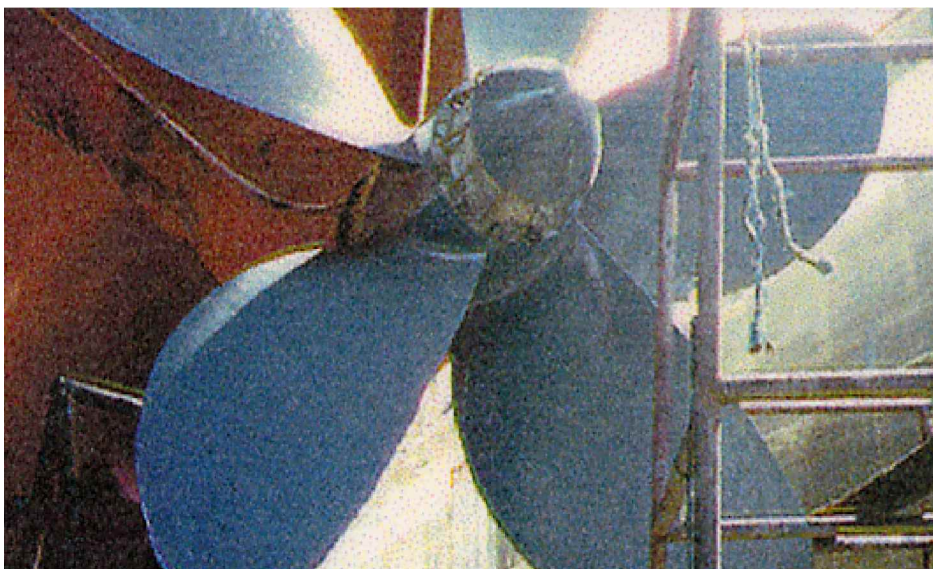


The accompanying photographs illustrate a very successful application carried out at a shipyard in

the Philippines. METALCLAD CeramAlloy CP+ and CL+ were used to completely repair

and then protect the two propellers on this large container ship. Two years later divers inspected the

CeramAlloy system and advised that it was in absolutely perfect condition.



700 Hicksville Road • ENECON Center Suite 110 • Bethpage, New York 11714  
Toll Free: 888-4-ENECON • Phone: 516.349.0022 • Fax: 516.349.5522  
Website: [www.enecon.com](http://www.enecon.com) • Email: [info@enecon.com](mailto:info@enecon.com)