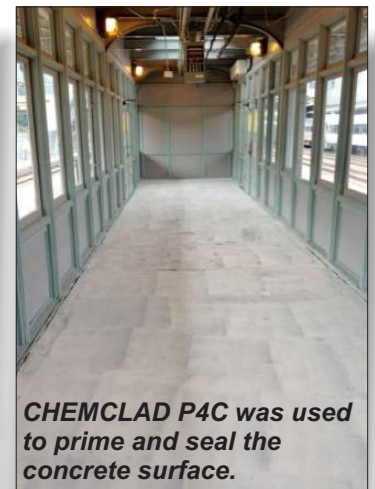


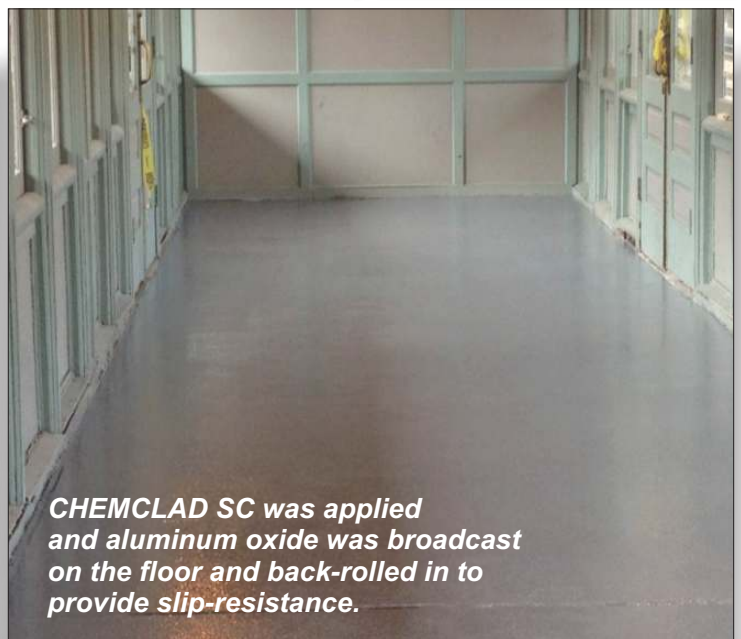
Commuter Train Waiting Room Floor is Protected and Given Slip-Resistance with CHEMCLAD



The floor was prepared by diamond grinding followed by a thorough cleaning.



CHEMCLAD P4C was used to prime and seal the concrete surface.



CHEMCLAD SC was applied and aluminum oxide was broadcast on the floor and back-rolled in to provide slip-resistance.

6 Platinum Court • Medford, NY 11763
Toll Free: 888-4-ENECON[®] (888-436-3266) • Phone: 516-349-0022 • Fax: 516-349-5522
www.enecon.com • info@enecon.com