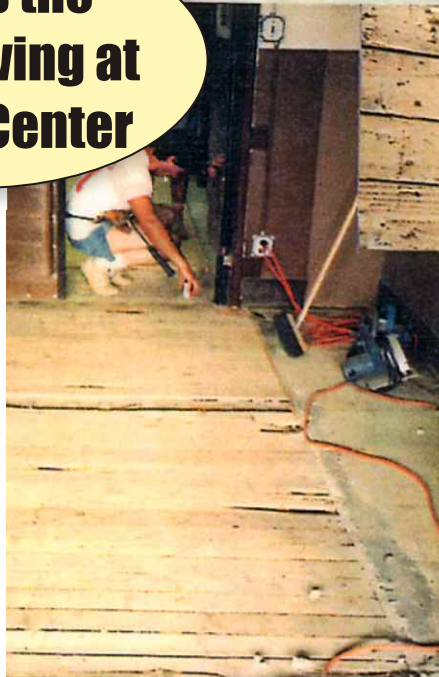




DuraQuartz



Keeps the Mail Moving at Postal Center



John Huber, ENECON North East's Senior Field Engineer, received a call to solve a difficult floor problem at a U.S. Post Office on Long Island, New York. Repeated attempts to repair the floor in a loading area proved futile due to the wear and abuse the floor sustains from heavily loaded, steel wheeled mail carts. Every repair that was tried provided only limited performance.

John recommended a ¼ inch DuraQuartz "pad" installation over new ¾ inch plywood decking.

The application was completed by a local contractor under John's careful supervision and has now given trouble-free performance at the Post Office for years. And once again, neither rain nor sleet nor hail, nor difficult floor problems...



DuraQuartz providing years of trouble-free performance at Postal Center loading area.

700 Hicksville Road • ENECON Center Suite 110 • Bethpage, New York 11714
Toll Free: 888-4-ENECON • Phone: 516.349.0022 • Fax: 516.349.5522
Website: www.enecon.com • Email: info@enecon.com