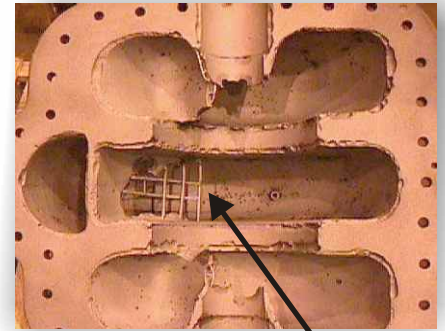
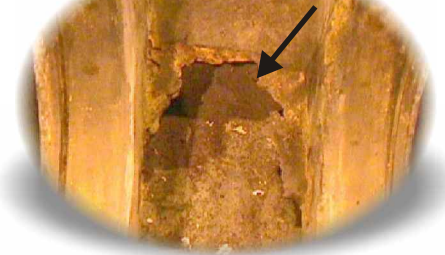


UK Refinery - One of the Largest in Europe - Salvages Badly Eroded/Corroded Pump With CeramAlloy & DuraTough



Note the severe damage...

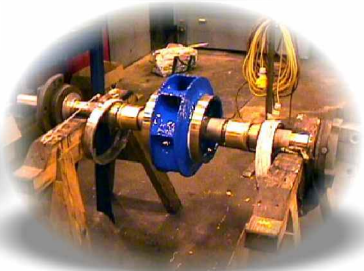
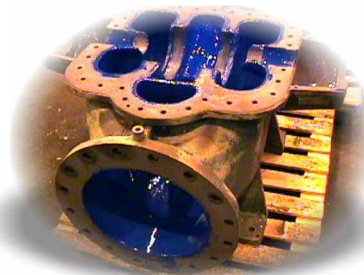
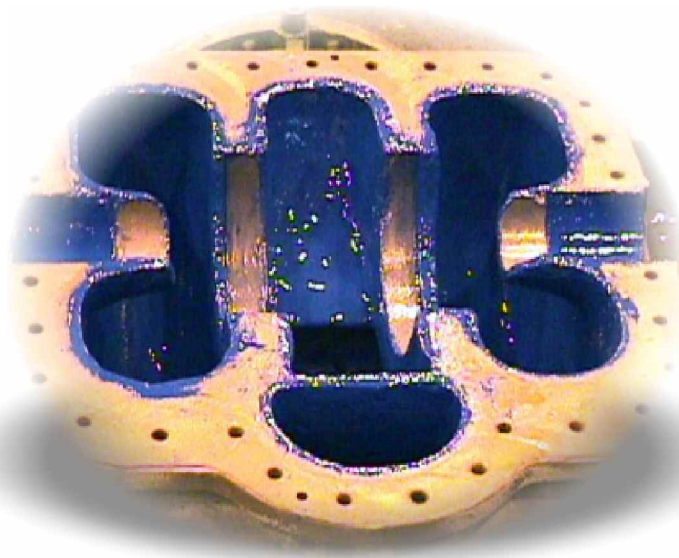


At this huge refinery in the United Kingdom, this severely damaged pump casing was ready for the scrap heap. However, Graham Wilson, the local ENECON Distributor, convinced the plant engineers to rebuild this

large pump casing and impeller with ENECON CeramAlloy and DuraTough High Performance Polymer composites. Since it was determined that a significant cause of the damage to the guide

vanes (cutwaters) and impeller was cavitation attack, DuraTough was selected to be used in conjunction with the CeramAlloy on the guide vanes and impeller for added protection.

Inspected after 9 months in service, the rebuilt pump was shown to be in excellent shape and continues to perform perfectly.



The pump impeller and bottom casing after 9 months continuous duty, showing the DuraTough DL protection of the impeller surface is still in good condition.

700 Hicksville Road • ENECON Center Suite 110 • Bethpage, New York 11714
Toll Free: 888-4-ENECON • Phone: 516.349.0022 • Fax: 516.349.5522
Website: www.enecon.com • Email: info@enecon.com